

REED TECHNOLOGY IN SMART HOME METERING WITH INDUSTRY 4.0

Smart meters and systems are used to measure actual energy consumption and use-time. Low power and tamper proof reed sensors are used in various home meters. The output signal produced with each actuation is sent to a wireless device that records the rotation speed and produces an output reading.

CUSTOMIZATION OPTIONS

- ✓ Communication module
- ✓ Service-interface
- ✓ LED's for operational status - WAN, Signal, Meter (illuminate with data transmission)
- ✓ EVU-interface
- ✓ Electronic domestic supply meter
- ✓ IR-control-LED
- ✓ LCD display
- ✓ Property number

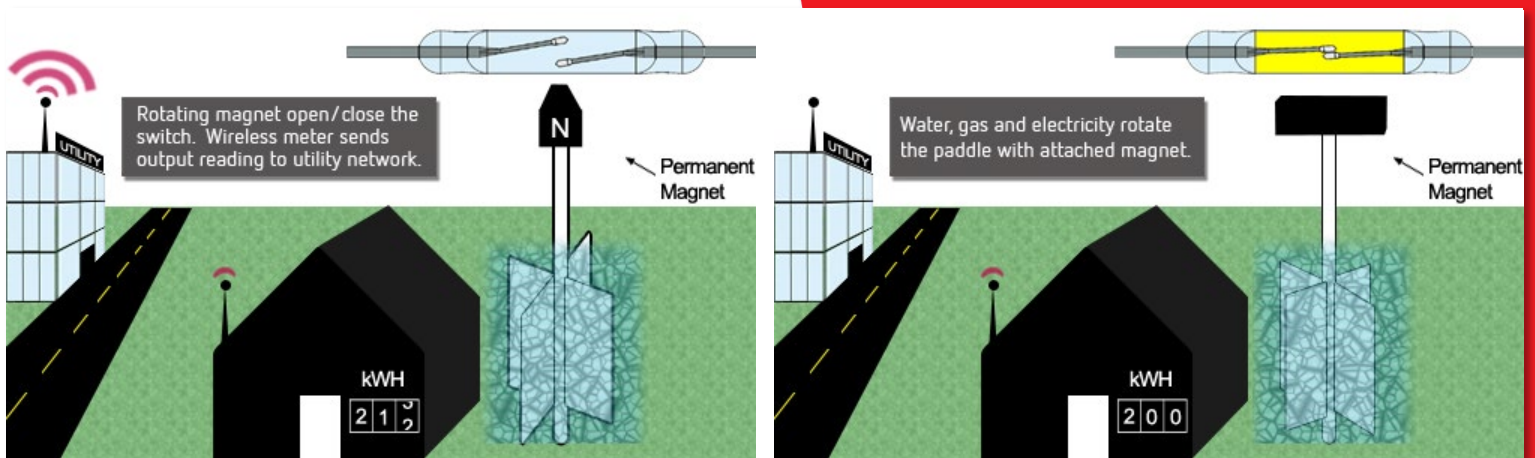


FEATURES

- › Integrated communication systems as needed
- › High efficiency reduces strain on electric grids

APPLICATIONS

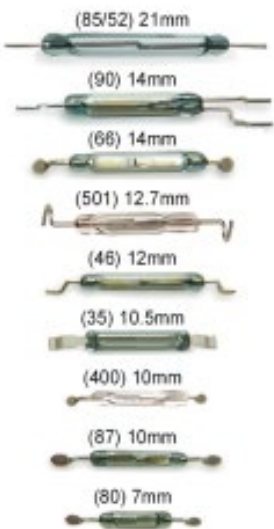
- › Electric Meter
- › Gas Meter
- › Water Meter
- › Heat Meter
- › Residential & Commercial
- › Energy Providers
- › Grid Operators



REED SWITCHES, REED SENSORS

Technical Specifications	Contact Form	Rated Power (W)	Switching Voltage (VDC)	Switching Current (A)	Carry Current (A)
MK24 SERIES	1A, 1B	0 to 3	0 to 30	0 to 0.3	0 to 0.5
MK31 SERIES	1A, 1B	0 to 3	0 to 30	0 to 0.3	0 to 0.5
MK17 SERIES	1A	0 to 10	0 to 170	0 to 0.25	0 to 0.5
MK16 SERIES	1A	0 to 10	0 to 200	0 to 0.5	0 to 0.5
MK22 SERIES	1A	0 to 20	0 to 200	0 to 1	0 to 1.25
MK15 SERIES	1A, 1B	0 to 10	0 to 200	0 to 0.5	0 to 1
MK23 SERIES	1A, 1C	0 to 100	0 to 1000	0 to 1	0 to 2.5
MK06 SERIES	1A, 1B, 1C 1E*	0 to 10	0 to 180 350 to 500*	0 to 0.5	0 to 1.25

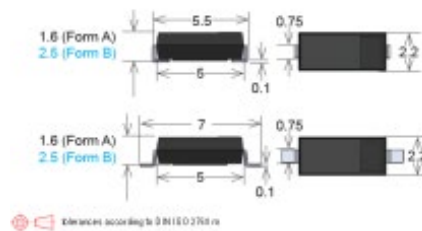
MK23



MK31



MK24



MK06



MK16



MK17



MK15



MK22

