

Tea Maker

Level and Position Detection



Contact Information:

Standex-Meder Electronics
World Headquarters
4538 Camberwell Road
Cincinnati, OH 45209 USA

Standex Americas (OH)
+1.866.STANDEX
(+1.866.782.6339)
info@standexelectronics.com

Meder Americas (MA)
+1.800.870.5385
salesusa@standexmeder.com

Standex-Meder Asia (Shanghai)
+86.21.37820625
salesasia@standexmeder.com

Standex-Meder Europe (Germany)
+49.7731.8399.0
info@standexmeder.com

- Sensors in tea makers play an important role by checking on the status of accessories such as the water tank, drip tray, and the cap (capsule machine).
- Sensors detect the level of water in the tanks and if there is a leakage in the system.
- Our sensors can also be used as an On/Off Switch without creating any noise during the switching process.



Applications:

Position Detection

- Water Tank
- Drip Tray
- Cap (capsule machine)
- On/Off Switch
- Selection Switch

Level Detection

permanent/empty position

- Water

Features:

- Hermetically sealed
- Millions of reliable operations
- Minimal space required
- Corrosion resistant
- Cost effective solution
- Contactless

Reed Technology for tea makers

Standex-Meder Electronics offers a wide range of products such as Reed Switches, Reed Sensors, Floats, and Magnetics.

We develop and manufacture customized solutions for our customers that specially adapt sensors and float magnets for their products. Examples of solutions include but are not limited to complete assemblies such as a PCB board, including Reed Switches and connectors.

Our sensors are available in a wide range of connection options, housing forms, and mounting options.

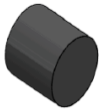
Standex-Meder engineers are available to discuss your requirements to find the best solution for your applications. Send us an email at info@standexmeder.com to discuss your needs today!

Mechanical Specifications/Features

- Different Cable Length Options
- Different Connectors
- Magnets & Floats available
- Different Housing Material
- Reach/RoHS Conformity



Reed Technology for tea makers



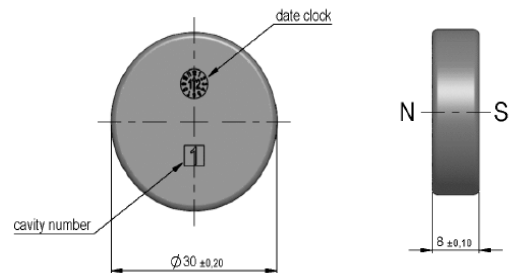
A Reed Switch requires either a permanent magnet or magnetic field in order to activate the switch, thus it is commonly called a Magnetic Reed Switch. Permanent magnets are available in a variety of different sizes, magnetic material, and shapes such as cylindrical, rectangular, disk or ring form.

- Low Price Solution
- No Corrosion



PP Floats have many excellent properties important to the operation of float-type sensors. Among the best float properties are it's water absorption of only 0.1% giving it excellent buoyancy.

- Magnet is hermetically sealed by the floating material
- Very low Risk to cant in the Canal
- No Danger of Confusion by Assembly
- FDA-Certified (Food and Drug Administration)



Switching Characteristics

