

About us

Standex Electronics developed its Toolshop in 1996 because of a growing demand for high precision quality tooling for our reed based sensor products. For more than 20 years this service has been expanded to support our customers demand and requirements.

We offer a complete package providing, prototypes, planning, tool design, manufacture of single & multi-impression mould tools, progression press tools, pressure die-casting tools. Special purpose tooling, tool repairs & maintenance, jig & fixtures.

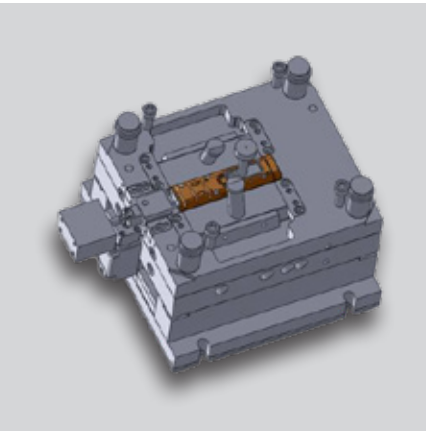
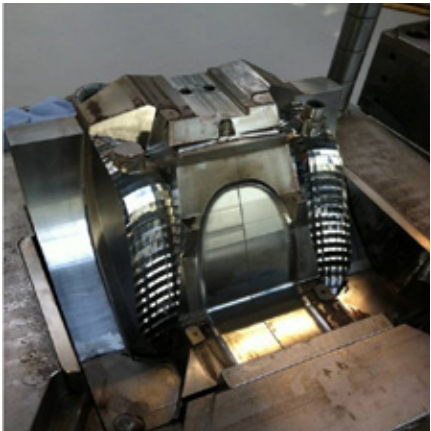
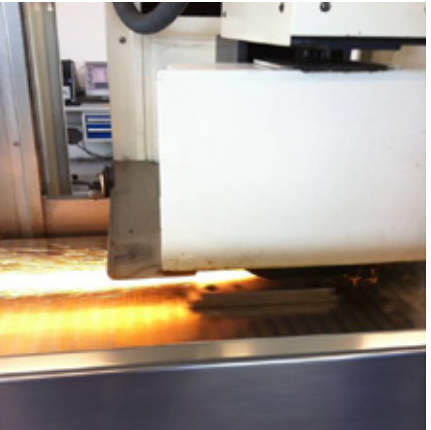
Our team of highly skilled and experienced employees will work with you providing a high-quality reliable service to find the most cost-effective manufacturing solution for your needs.

Our continued investment in machine tools and computer technology allows us to offer the most advance techniques available using fully integrated CAD/CAM software, wire eroding, EDM machining, CNC milling, and a range conventional machine tools.

We operate from our purpose built 500 square meter premises based in Großbreitenbach Germany.



StandexMeder Electronics GmbH
Ilmenauer Strasse 7i
98701 Großbreitenbach / Germany
Phone +49 (0)3678 1273-16
tooling-emea@standexelectronics.com



Tool Shop

Machines and equipments

Sink EDM machine
EXERON / INGERSOLL
 Machining stroke max. 620x420x400 mm

Milling machine
HERMLE / BRIDGEPORT
 Machining stroke max. 1000x500x500 mm

Wire EDM machine
SODICK / MITSUBISHI
 Machining stroke max. 530x370x265 mm

Grinding machine
ELB-SCHLIFF / ZIERSCH
 Machining stroke max. 800x400x475 mm

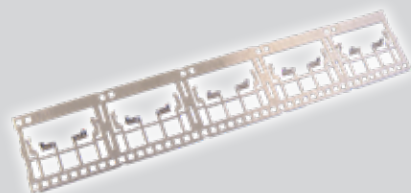
Measuring machine
ZEISS
 Machining stroke 450x450x400mm

**Several state-of-the-art lathe,
 milling and grinding machines**

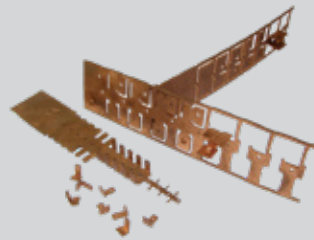


Stamping tools

Progressive stamping tools
 for lead frames



Stamped parts
 for housing shields and contact pins



Injection mold tools

Design parts
 with high quality
 surfaces



Technical molded parts
 Gearwheels, spindles, frames and holders



Optical components



Insert molded parts

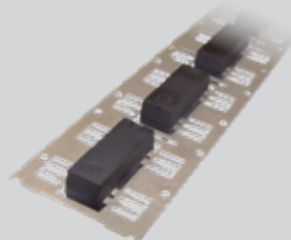


Specific tools

Die-cast zinc tools



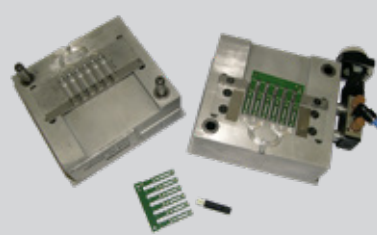
Transfer molding tools



**Various types for prototyping,
 molding and stamping**



Low-pressure injection molding



Machine and assembly services

Stainless steel tube machining
 cutting, laser welding,
 marking

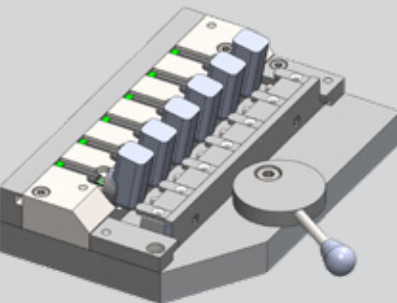


Quelle: joke Technology GmbH

Manufacturing of electrodes
 in copper or graphite



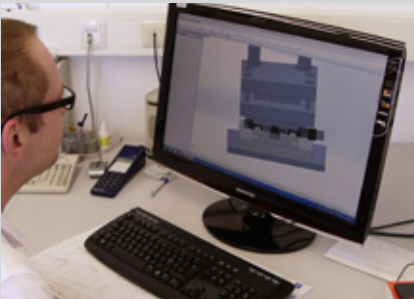
Fixture design and production



Tooling repair and maintenance



**Development, design
 and construction**



**CNC design, simulation,
 verification and integration**

