

Food Service Market Applications



Contact Information:

Standex-Meder Electronics

Headquarter
4538 Camberwell Road
Cincinnati, OH 45209 USA

Standex Americas (OH)

+1.866.STANDEX
(+1.866.782.6339)
info@standexelectronics.com

Meder Americas (MA)

+1.800.870.5385
salesusa@standexmeder.com

Standex-Meder Asia (Shanghai)

+86.21.37820625
salesasia@meder.com

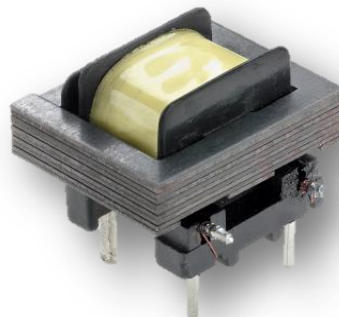
Standex-Meder Europe

(Germany)
+49.7731.8399.0
info@standexmeder.com

Standex-Meder supplies custom transformers, power supplies and electronic components to manufacturers of foodservice equipment. Often our innovative thinking leads to unique designs and technologies – like current sense transformers which sense the drag on rotors used in “slushy” machines, or fluid level switches used for syrup dispensers.

Companies rely on us to supply unparalleled components, yet we provide something even more valuable - technical assistance, ideas, and engineering expertise at each step along the design and manufacturing process.

Our robust designs are available as single components – or can be combined with ancillary services such as wiring harnesses, leads, molding, stamping, even integration into upstream/downstream components to simplify installation and reduce costs.



Custom Standex-Meder assemblies for food-service applications:

- Current sense transformers for frozen drink machines
- Syrup level sensors in auto dispensing system for food processing
- Custom transformers for industrial ovens
- Steam table liquid level sensors
- Steam oven liquid level sensors

Capabilities include:

- Connector & Terminal Engineering
- Hi-volume, Progressive Die Stamping
- Experienced in UL, CSA, IEC, TUV & VDE Standards
- Mechanical Engineering & Electronic Component Packaging
- 3-D Solid Modeling Design
- Plastic Molding Capabilities
- Wire Prep and Wire Harness Assembly
- Rapid Prototyping
- Glass to Metal Sealing
- Laser Welding
- Magnetic Component Engineering
- Power Supply & Other Systems Engineering
- 52ga - 8ga & Foil Magnetic Component Winding
- Wind and assemble all core shapes and types including laminated
- Sensor & Reed Switch Engineering
- Complete lab & test capabilities for Mil/Aero, automotive and other industries as required

Laboratory test capabilities for lighting applications:

- Thermal Shock Testing (-70°C to 200°C, LN2 boost assures less than a 5 minute air-temperature recovery time).
- Thermal Cycle Testing (-68°C to 177°C)
- Humidity Testing (-18°C to 93°C, 98% RH, cycle temp or steady state).
- Vibration Testing (Sine or Random profile, 1" pkpk displacement, 0 to 80 g pk, 5 to 2000 HZ)
- Mechanical Shock Drop Testing (½ sine 50g 11ms, ½ sine 1500g .5ms, or sawtooth 100g 6ms)
- Hi Temp Testing (Up to 260°C)
- Salt Fog Testing
- Solderability Testing

The Oakville lab facility is approved as a Witness Testing Location by the following agencies:

- Canadian Standards Association (CSA)
- Underwriters Laboratories
- Intertek Testing Services (ETL)
- TÜV Rheinland®

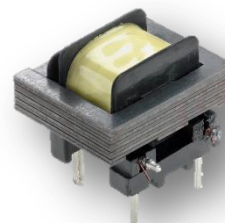


Current Sense Transformer for a Broad Range of Applications



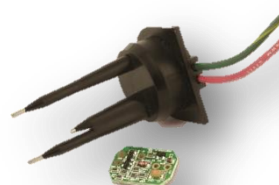
Liquid Level Sensors

Control Circuit Transformer – Bracket Mounted



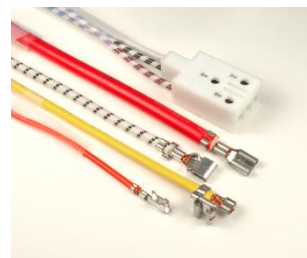
Current Sense Transformer for Frozen Drink Machine

Class 2 Energy-limiting Wired in Transformer



Conductive Liquid Level Sensor

Control Circuit Power Transformer – Channel Frame Mounted



Wire Harness Connector Assemblies