

## HVAC Market Applications - Product Guide



### Contact Information:

#### Standex-Meder Electronics

Headquarter  
4538 Camberwell Road  
Cincinnati, OH 45209 USA

#### Standex Americas (OH)

+1.866.STANDEX  
(+1.866.782.6339)  
[info@standexelectronics.com](mailto:info@standexelectronics.com)

#### Meder Americas (MA)

+1.800.870.5385  
[salesusa@standexmeder.com](mailto:salesusa@standexmeder.com)

#### Standex-Meder Asia (Shanghai)

+86.21.37820625  
[salesasia@meder.com](mailto:salesasia@meder.com)

#### Standex-Meder Europe

(Germany)  
+49.7731.8399.0  
[info@standexmeder.com](mailto:info@standexmeder.com)

Custom transformers can often help designers of HVAC/R equipment to gain a competitive edge in the marketplace. Our robust designs are available as single components – or can be combined with other components such as wiring harnesses, leads, moldings, stamping, even integration into up-stream/downstream components like sensors to simplify installation and reduce costs.

Combining multiple HVAC components provides further proof of the value of custom products. Standex-Meder engineers have worked with several major compressor suppliers to develop custom products – from custom terminals for high amperage applications to wiring harnesses that incorporate Standex-Meder terminals, blocks and in line fuses.

Commercial cooling appliances have also benefitted from Standex-Meder current sense transformers. We helped a manufacturer of frozen drink machines increase the consistency of their end product by monitoring current draw as the agitator paddles moved through the freezing mix, rather than measuring temperature.

### Custom and Standard Standex-Meder assemblies for HVAC/R applications:

- Current sense transformers
- Transformers for commercial and residential heating applications
- Connector blocks to mate with hermetically-sealed connectors for air conditioning compressor applications
- PC mount current-sense transformer with integrated primary winding; Designed to meet your agency requirements
- Progressive-Die Stamped Terminals for HVAC/R
- A broad range of Push-on / Crimp-on connectors

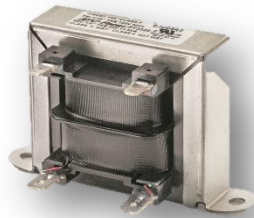
### Capabilities include:

- Application Engineering
- Connector & Terminal Engineering
- Hi-volume, Progressive Die Stamping
- Experienced in UL, CSA, IEC, TUV & VDE Standards
- Mechanical Engineering & Electronic Component Packaging
- 3-D Solid Modeling Design
- Plastic Molding Capabilities
- Wire Prep and Wire Harness Assembly
- Rapid Prototyping
- Glass to Metal Sealing
- Laser Welding
- Magnetic Component Engineering
- 52ga - 8ga & Foil Magnetic
- Component Winding
- Wind and assemble all core shapes and types including laminated
- Sensor & Reed Switch Engineering
- Complete lab & test capabilities for Mil/Aero, automotive and other industries as required

**Laboratory test capabilities for lighting applications:**

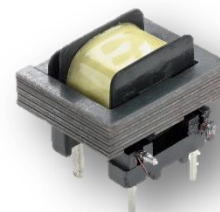
- Thermal Shock Testing (-70°C to 200°C, LN2 boost assures less than a 5 minute air-temperature recovery time).
- Thermal Cycle Testing (-68°C to 177°C)
- Humidity Testing (-18°C to 93°C, 98% RH, cycle temp or steady state).
- Vibration Testing (Sine or Random profile, 1" pkpk displacement, 0 to 80 g pk, 5 to 2000 HZ)
- Mechanical Shock Drop Testing (½ sine 50g 11ms, ½ sine 1500g .5ms, or sawtooth 100g 6ms)
- Hi Temp Testing (Up to 260°C)
- Salt Fog Testing
- Solderability Testing

Channel-Mount Transformers  
for a Variety of HVAC/R and  
Other Applications



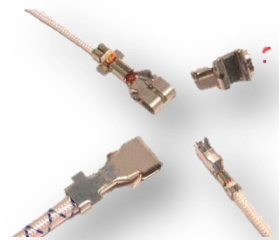
Current-Sense Trans-  
formers for a Broad  
Range of Applications

Custom Solenoid Assemblies  
and Value-Added Packaging



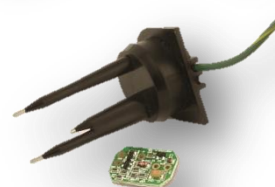
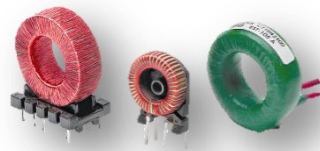
PC-Mount Current-  
Sense Transformer  
with Integrated Pri-  
mary Winding: De-  
signed to Meet UL  
Requirements

Progressive-Die Stamped Ter-  
minals for HVAC/R and Other  
Applications



Push-on / Crimp-on  
Connectors

Toroidal Current-Sense  
Transformers, PC Mount  
and with Wire Leads



Custom Fluid-Level  
Sensor, Ideal for  
Severe or 'Cruddy'  
Applications Where the Fluid  
is Corrosive or Builds Up on  
the Sensor Probes

**The Oakville lab facility is approved as a Witness Testing Location by the following agencies:**

- Canadian Standards Association (CSA)
- Underwriters Laboratories
- Intertek Testing Services (ETL)
- TÜV Rheinland®