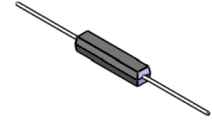
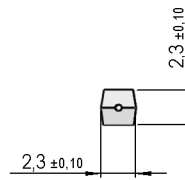
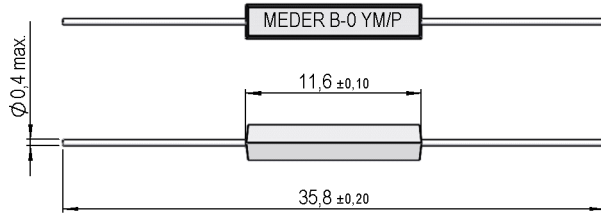
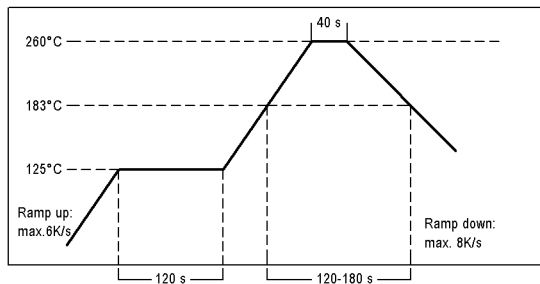


Products for tomorrow...

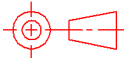


Reflow soldering conditions acc. to JEDEC norm J-STD-020C



MARKING

MEDER-label
 Production code EN60062/factory code
 MEDER-Logo
 Produktionscode EN60062/Fertigungsstätte



tolerances according to DIN ISO 2768 m

| Magnetic properties | Conditions | Min | Typ | Max | Unit |
|--------------------------------------|--|--------|-----|-----|------|
| Pull-In excitation (Reference value) | Reed switch unmodified measured in coil- "define operation" | 10 | | 15 | AT |
| Test-Coil | Reed switch unmodified | KMS-01 | | | |

| Contact data 87 | Conditions | Min | Typ | Max | Unit |
|---------------------------|--|---------|-----|-----|------|
| Contact-No. | | 87 | | | |
| Contact-form | | A | | | |
| Contact-material | Plating thicknesses are proprietary | Rhodium | | | |
| Contact rating | Any DC combination of V & A not to exceed their individual max.'s | | | 10 | W |
| Switching voltage | DC or Peak AC | | | 200 | V |
| Carry current | DC or Peak AC | | | 0.5 | A |
| Switching current | DC or Peak AC | | | 0.4 | A |
| Contact resistance static | Measured with 40% overdrive Start Value | | | 150 | mOhm |
| Breakdown voltage | according to IEC 255-5 | 230 | | | VDC |

| Special Product Data | Conditions | Min | Typ | Max | Unit |
|----------------------|------------|----------------------|-----|-----|------|
| Number of contacts | | 1 | | | |
| Housing material | | mineral filled epoxy | | | |
| Approval | | UL-File-Nr. E156887 | | | |

| Environmental data | Conditions | Min | Typ | Max | Unit |
|---------------------|-----------------------------|--------------|-----|-----|------|
| Shock | 1/2 sine wave duration 11ms | | | 30 | g |
| Vibration | from 10 - 2000 Hz | | | 20 | g |
| Ambient temperature | | -40 | | 130 | °C |
| Storage temperature | | -50 | | 130 | °C |
| Cleaning | | fully sealed | | | |

Modifications in the sense of technical progress are reserved

Designed at: 15.04.09 Designed by: WKOVACS
 Last Change at: 10.07.11 Last Change by: DRUDOLF

Approval at: 05.03.10 Approval by: DRUDOLF
 Approval at: 10.07.11 Approval by: DRUDOLF

Rev. No.: 03