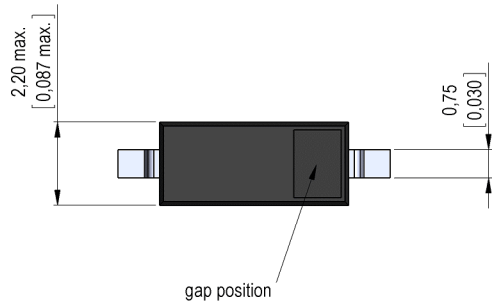
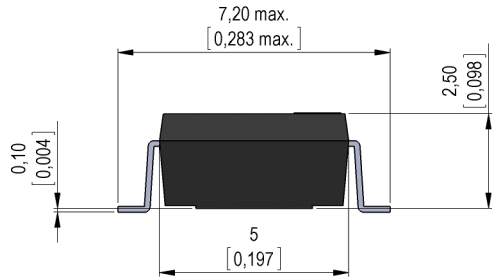


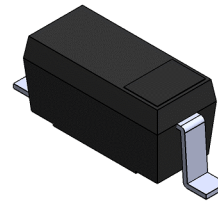
**Dimensions mm[inch]**

tolerances according to DIN ISO 2768-m  
Toleranzen gem. DIN ISO 2768-m

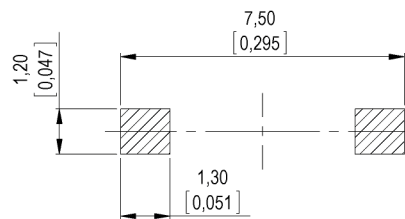


**Isometric**

Scale 5:1  
Maßstab 5:1

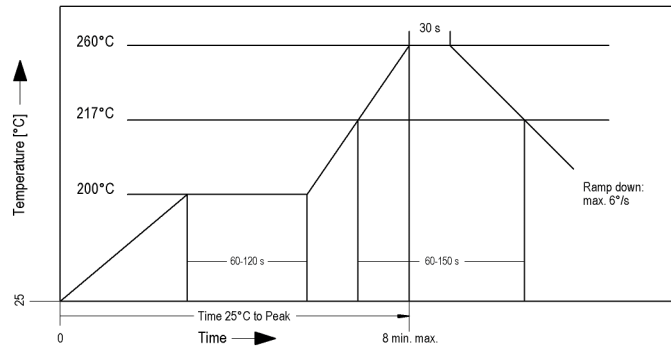


**Recommended PCB Pad Layout**



**Solder Reflow Profile**

reflow soldering conditions according to JEDEC norm J-STD 020D.1



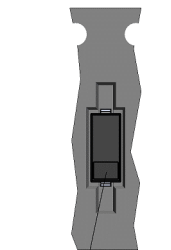
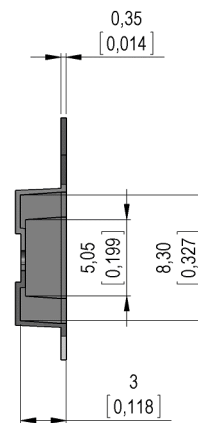
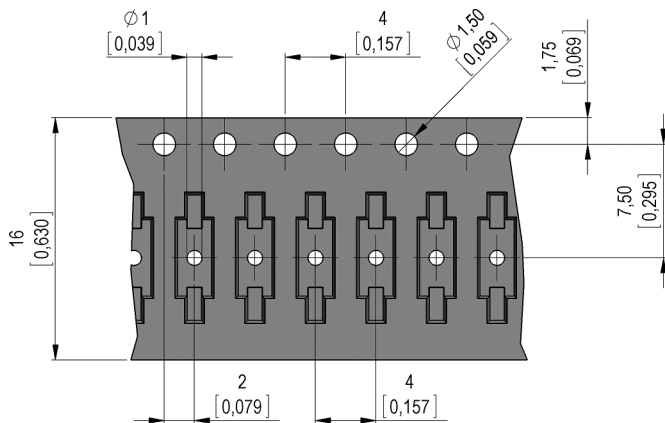
**Notes:**

Min. distance magnet to sensor: 1,0mm  
Mindestabstand Magnet zu Sensor: 1,0mm

In case of direct contact with the magnet, the sensor can change his sensitivity!  
Direkte Berührung mit dem Betätigungsmagnet kann die Empfindlichkeit verändern!

The north-pole of the magnet is on the side of the gap position.  
Der Nordpol des Magneten ist der Seite der Spaltposition.

**Packaging**



Gap position opposite to the sprocket holes.



Europe: +49 / 7731 8399 0

| Email: info@standexmeder.com

Item No.:

USA: +1 / 508 295 0771

| Email: salesusa@standexmeder.com

**9240100021**

Asia: +852 / 2955 1682

| Email: salesasia@standexmeder.com

Item:

**MK24-B-2-OE**

| Magnetic properties                   | Conditions                                  | Min           | Typ | Max | Unit |
|---------------------------------------|---|---------------|-----|-----|------|
| Pull-In                               | at 20°C                                     | 20            |     | 40  | AT   |
| Drop out                              | at 20°C                                     | 10            |     | 35  | AT   |
| Test equipment                        |   | KMS-11 + AP74 |     |     |      |
| Pull-In in milliTesla (modified conta | MS150 -<br>phys. caused tolerance +/- 0,1mT | 1,4           |     | 3,3 | mT   |
| Test equipment                        |   | MS-150        |     |     |      |

| Contact data 04                   | Conditions   | Min       | Typ | Max | Unit |
|-----------------------------------|--|-----------|-----|-----|------|
| Contact - No.                     |  | 04        |     |     |      |
| Contact-form                      |  | B - NC    |     |     |      |
|                                   |  | Ruthenium |     |     |      |
| Contact rating ( > 9 AT )         | Any DC combination of V & A<br>not to exceed their individual max.'s |           |     | 3   | W    |
| Switching voltage                 | DC or Peak AC  |           |     | 30  | V    |
| Switching current ( > 9 AT )      | DC or Peak AC  |           |     | 0,3 | A    |
| Carry current ( > 9 AT )          | DC or Peak AC  |           |     | 0,5 | A    |
| Contact resistance static (>9AT ) | Measured with 40% overdrive<br>Start value                           |           |     | 200 | mOhm |
| Insulation resistance             | RH <45 %, 100 V test voltage   | 10        |     |     | GOhm |
| Breakdown voltage ( > 9 AT )      | according to IEC 255-5   | 100       |     |     | VDC  |

| Special Product Data | Conditions | Min                  | Typ | Max | Unit |
|----------------------|------------|----------------------|-----|-----|------|
| Housing material     |            | mineral-filled epoxy |     |     |      |

| Environmental data    | Conditions                  | Min  | Typ | Max | Unit |
|-----------------------|-----------------------------|--|-----|-----|------|
| Shock                 | 1/2 sine wave duration 11ms |  |     | 30  | g    |
| Vibration             | from 10 - 2000 Hz           |  |     | 20  | g    |
| Remark                |                             | Pick & place force should not exceed 25cN!         |     |     |      |
| Operating temperature |                             | -40  |     | 115 | °C   |
| Storage temperature   |                             | -50  |     | 115 | °C   |
| Washability           |                             | fully sealed                                       |     |     |      |
| Remark                |                             | no direct touch between sensor and strong magnets! |     |     |      |

| General data | Conditions | Min              | Typ | Max | Unit |
|--------------|------------|------------------|-----|-----|------|
| Packaging    |            | T&R per 500 pcs. |     |     |      |

Modifications in the sense of technical progress are reserved

Designed at: 15.03.10 Designed by: THAUKE

Approval at: 27.01.11 Approval by: DKUECHLER

Last Change at: 03.05.17 Last Change by: WKOVACS

Approval at: 04.05.17 Approval by: MREIZNER

Rev. No.: 07