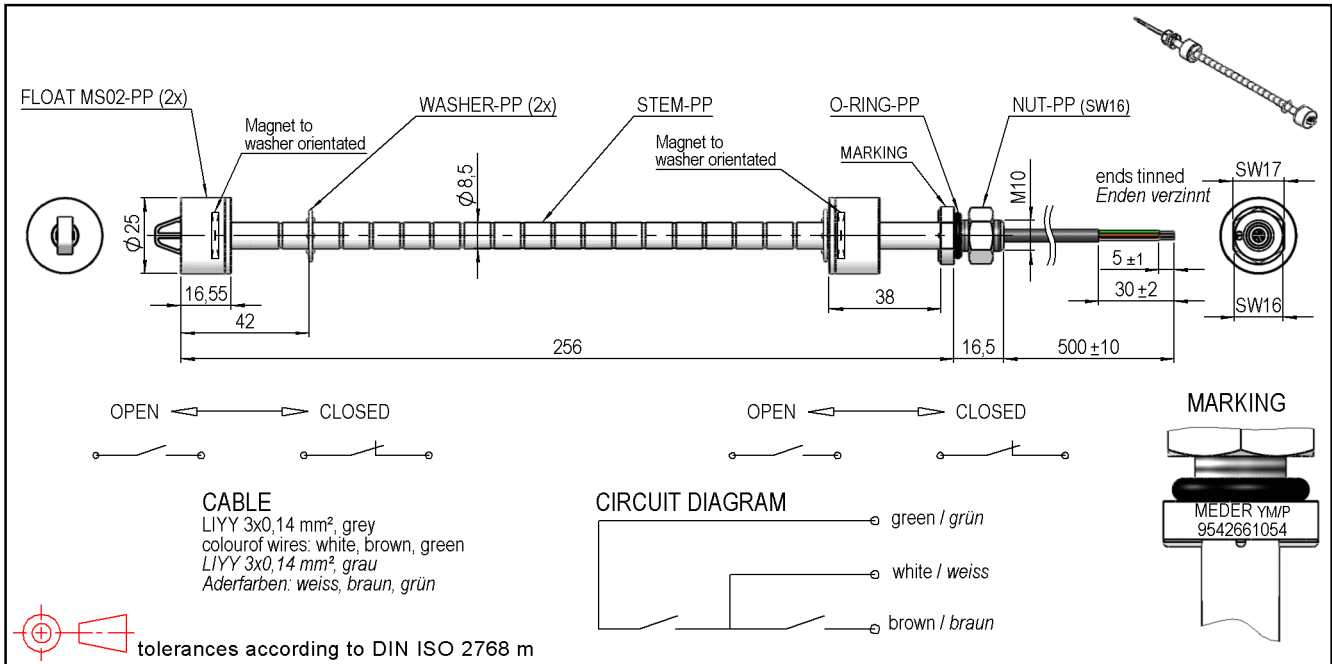


Products for tomorrow...



Special Product Data	Conditions	Min	Typ	Max	Unit
Contact rating	Any DC combination of V & A not to exceed their individual max.'s			10	W
Switching voltage	DC or Peak AC			180	V
Carry current	DC or Peak AC			1,25	A
Switching current	DC or Peak AC			0,5	A
Sensor-resistance	measured with 40% overdrive			300	mOhm
Housing material			PP		
Case colour			nature		
Sealing compound			Polyurethan		

Environmental data	Conditions	Min	Typ	Max	Unit
Operating temperature	cable not moved	-30		80	°C
Operating temperature	cable moved	-5		80	°C
Storage temperature		-30		80	°C
Safety class	DIN EN 60529		IP68		

Cable specification	Conditions	Min	Typ	Max	Unit
Cable type			round cable		
Cable material			PVC		
Cross section			0,14 sq-mm		

General data	Conditions	Min	Typ	Max	Unit
Mounting advice		over 5m cable, a resistor is recommended.			
Tightening torque				1	Nm

Modifications in the sense of technical progress are reserved

Designed at: 24.11.09 Designed by: WKOVACS
 Last Change at: 05.11.10 Last Change by: WKOVACS

Approval at: 24.11.09 Approval by: DKUECHLER
 Approval at: 05.11.10 Approval by: DKUECHLER

Rev. No.: 02